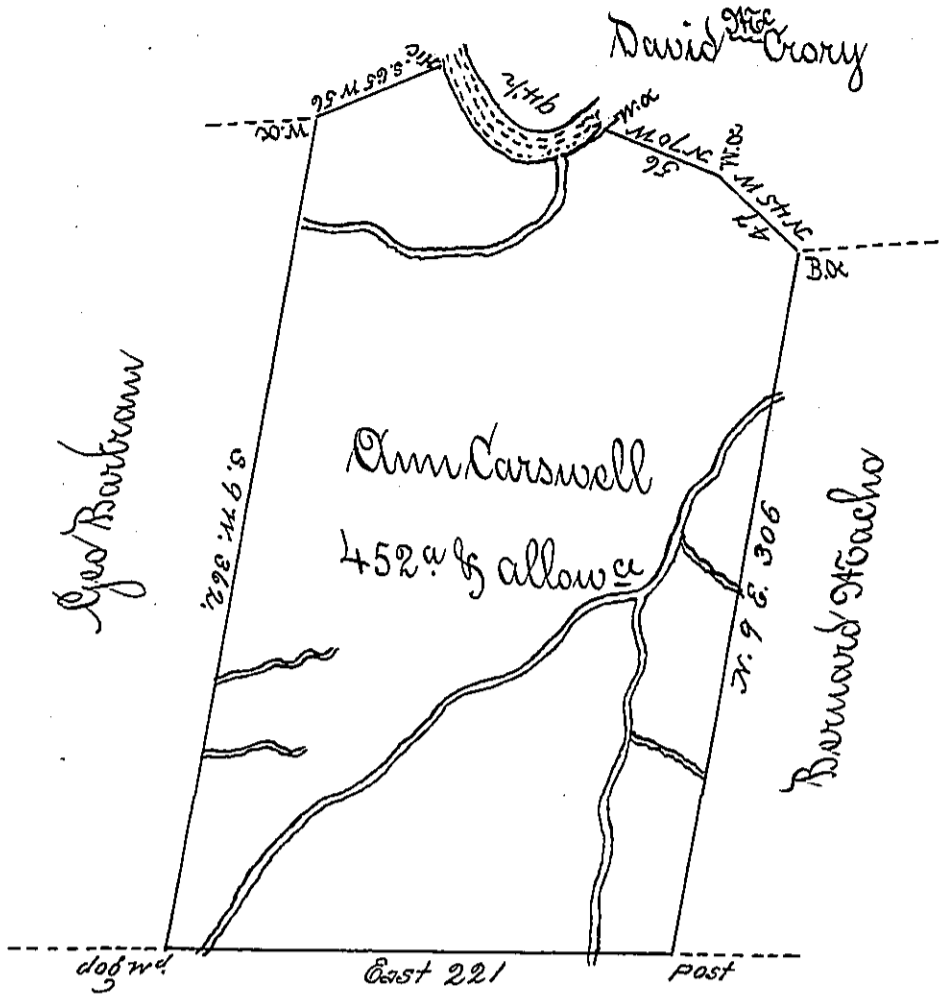


Courses by distance 196
down Crooked Creek

S 45 W 14
West 28
N 46 W 52 1/2
94 1/2



Enoch Mascott
Page 273.

Surveyed to Ann Carswell on the 14 day of 9th mo^r 1786 the above described tract of four hundred & fifty two acres and allowance of six per cent situated on Crooked Creek about eight Miles from the Keiskaminites including Iron Ore, in Westmoreland County By warrant of the 14 day of July 1784.

John Lukens Esq. S. Genl.

Joshua Elder D. S.

IN TESTIMONY that the above is a copy of the original remaining on file in the Department of Internal Affairs of Pennsylvania, made conformably to an Act of Assembly approved the 16th day of February, 1833, I have hereunto set my Hand and caused the Seal of said Department to be affixed at Harrisburg, this second day of January 1903.

James W. Pitta
Secretary of Internal Affairs.